



Datasheet for the Groasis Capillary Drill

Part of the Groasis Ecological Water Saving Technology

Use the Groasis Ecological Water Saving Technology and benefit from our unique

Triple Ninety Benefit: use 90% less water, plant at 90% lower cost, and enjoy a 90% survival rate.*

Content

1. General info and drill heads.....	1
2. Direct capillary drill (BGB\BE)	2
3. Side capillary drill	4
4. Crane capillary drill	5

1. General info and drill heads

All drills are having CE-marking and are delivered with a CE declaration.

The HS code for all capillary drills is: 84323919

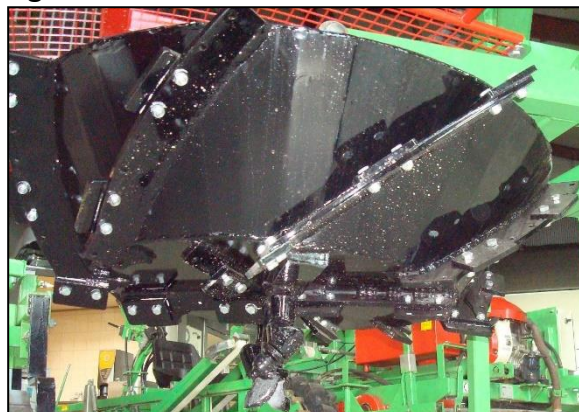
All drills are supplied with a heavy duty drill head, except the side capillary drill – which can only be supplied with the light drill head. The heavy duty drill head is capable of drilling soil – sand or clay – with stones up to 20 cm (8”) diameter and is equipped with point chisels.

- Drill hole depth is 15 to 20 cm (6 to 8”)
- Drill hole diameter is 70 cm (28”)
- [See this video](#) at 1:40 minutes
- We recommend transporting all drills in a container, not on pallets
- A forklift is required for loading and unloading

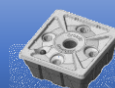
Heavy duty drill head



Light drill head



* compared to traditional irrigation methods such as drip irrigation



2. Direct capillary drill (BGB\BE)

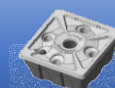


The direct capillary drill consists of a 3-point frame with support wheels, in height adaptable. A hydraulic driven drill column is installed in the frame. Lowering and lifting of the drill is done by the lift arms of the tractor. The required hydraulics are supplied by the tractor (not included). It can be installed on the front or rear of a tractor.



Product specifications of the direct capillary drill

Dimensions	L x W x H: 230 x 150 x 170 cm (90.6 x 59 x 66.9")
Weight	Approximately 1.050 kg (approx. 2.310 lbs)
Hydraulics	2 Hydraulic connections press with (free) return; Hydraulics up to 40 l/min double acting valve preferably to be operated simultaneously with tractor lift
Connections	Standard connections on machine male 3/8" bsp
Suitable for inclinations up to	Approximately 15°
Tractor requirements	Minimum 100HP = 75Kw
Drill head	By default supplied with heavy duty drill head (light drill head optional)
Other comments	See https://www.youtube.com/watch?v=suOhAvi8JiQ at 2:02 minutes; Delivered without protective skirt (not necessary in practice)



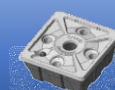
3. Side capillary drill



This product is perfect for use in orchards or for planting along roads.

Product specifications of the side capillary drill

Dimensions	L x W x H: 140 x 180 x 170 cm (55.1 x 70.9 x 66.9")
Weight	Approximately 450 kg (approx. 990 lbs)
Hydraulics	2 Hydraulic connections press with (free) return; Hydraulics up to 40 l/min double acting valve preferably to be operated simultaneously with tractor lift
Connections	Standard connections on machine male 3/8" bsp
Suitable for inclinations up to	Approximately 15°
Tractor requirements	Minimum 50HP = 37.5kW
Drill head	By default supplied with light drill head
Other comments	See https://www.youtube.com/watch?v=suOhAvi8JiQ at 1:44 minutes



4. Crane capillary drill



Product specifications of the crane capillary drill

Dimensions	L x W x H: 120 x 120 x 100 cm (47.2 x 47.2 x 39.3")
Weight	Approximately 300 kg (approx. 660 lbs)
Hydraulics	2 Hydraulic connections press with (free) return; Hydraulics from 45 up to 70 l/min double acting valve
Connections	Standard connections on machine male 3/8" bsp
Suitable for inclinations up to	Approximately 60°
Tractor requirements	Minimum 50HP = 37.5kW
Drill head	By default supplied with heavy duty drill head (light drill head optional)
Other comments	See https://www.youtube.com/watch?v=suOhAvi8JiQ at 1:54 minutes



For prices and availability please contact your local Groasis distributor, or contact Groasis (info@groasis.com) directly.

Disclaimer:

Groasis B.V., its affiliates, agents, and employees, and all persons acting on its or their behalf (hereinafter each separately and all together being referred to as 'Groasis') disclaim any and all liability for any errors, inaccuracies, deviations and/or incompleteness contained in any datasheet or in any other disclosure relating to any product of Groasis.

It is the customer's and/or end-user's responsibility to validate that a particular product is suitable for use in a particular application. Parameters and/or specifications provided in datasheets or in any other disclosure relating to any product of Groasis may vary in different situations and performance may vary over time.

All specifications and/or parameters, including typical parameters, must be validated for each customer/end- user application by the customer's or end- user's technical experts. Any actual or theoretical product specifications do not expand or otherwise modify Groasis' General Terms and Conditions of Trading, including but not limited to the warranty expressed therein.

Planting manual
الزراعة دليل
रोपण के मैनुअल
種植手冊
Mwongozo wa kupanda
Dikim el kitabi
Manual de siembra
Manual de plantação
Manuel de plantation
Handleiding om te planten



Read the planting manual in our Groasis Waterboxx[®] app, which can be found in Google Play or the Apple App store.

Groasis' General Terms and Conditions of Trading can be found [here](https://www.groasis.com/general-terms-and-conditions/) (<https://www.groasis.com/general-terms-and-conditions/>).

Website	http://www.groasis.com
YouTube channel tree planting	https://www.youtube.com/user/Groasiswaterboxx
YouTube channel vegetables planting	https://www.youtube.com/user/Groasisvegetables

Document validity date	December 31, 2023
Document version	2

